

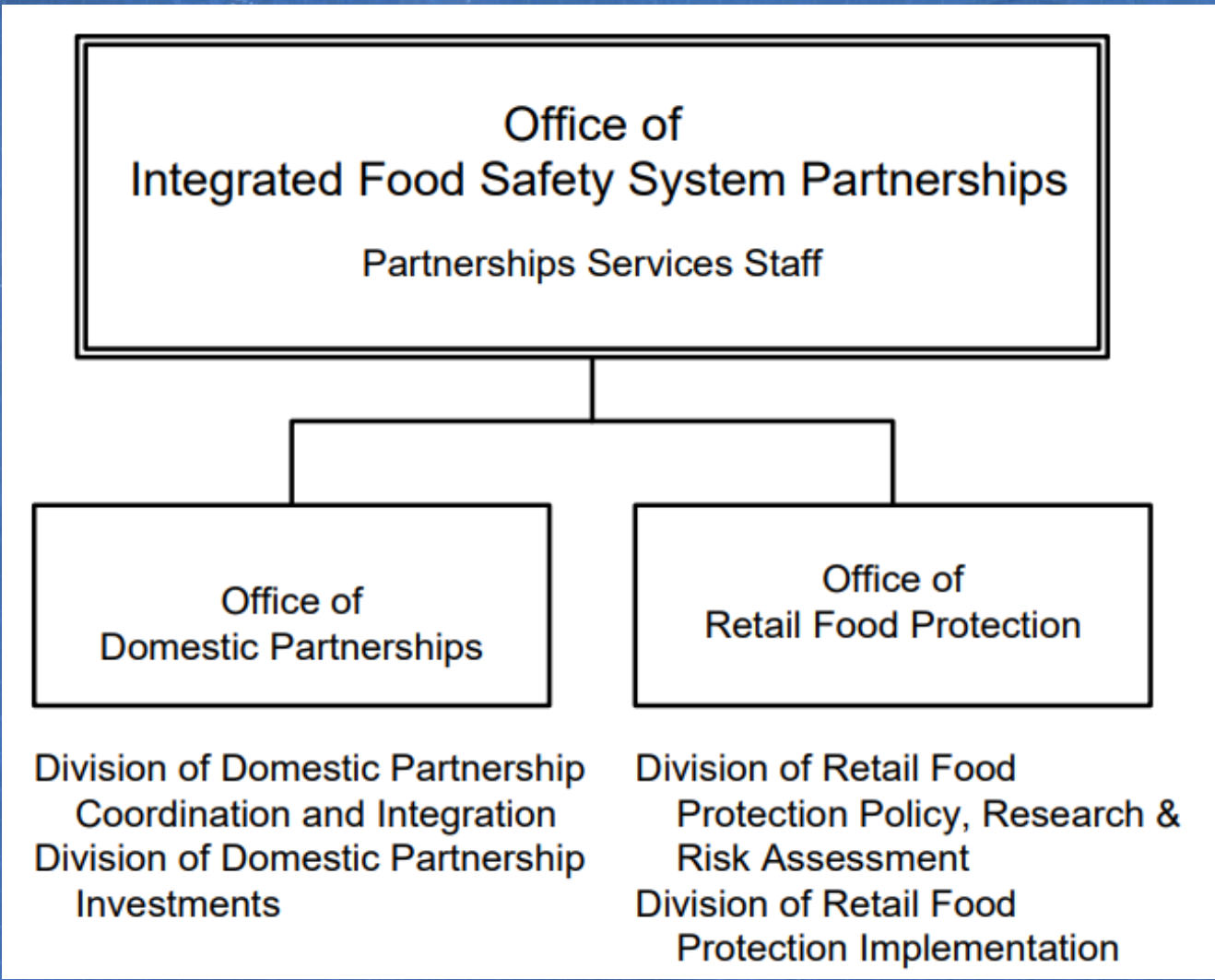


FDA UPDATE

Office of Domestic Partnerships

Disclaimer

- This presentation describes current thinking and strategic plans regarding HFP/IFSSP contract and grant programs.
- Information described here is subject to change and may not be reflected in final SOWs, RFPs, FOAs, or Notices of Award.
- Your feedback is utilized to shape future funding opportunities



HUMAN AND ANIMAL FOOD CONTRACTS, COOPERATIVE AGREEMENTS, AND GRANTS



RETAIL FOOD FLEXIBLE FUNDING MODEL

RETAIL COLLABORATIVE



The Collaborative

These organizations make up the Retail Food Safety Regulatory Association Collaborative.



Association of Food and Drug Officials



Association of State And Territorial Health Officials



Conference for Food Protection



National Association of County & City Health Officials

National Association of County and City Health Officials



National Environmental Health Association

National Environmental Health Association



U.S. CENTERS FOR DISEASE CONTROL AND PREVENTION

U.S. Centers for Disease Control and Prevention



U.S. FOOD & DRUG ADMINISTRATION

U.S. Food and Drug Administration

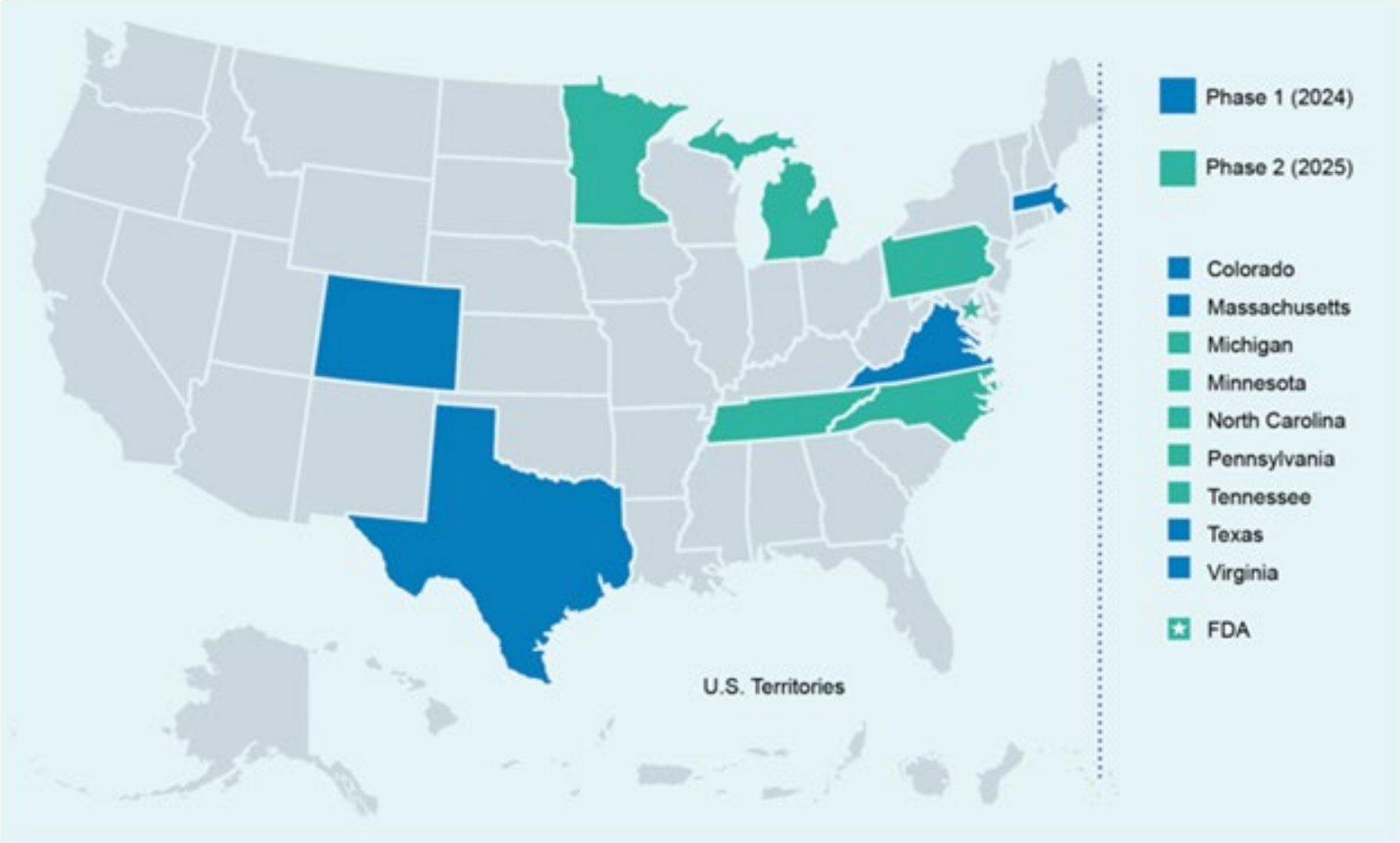
LABORATORY FLEXIBLE FUNDING MODEL



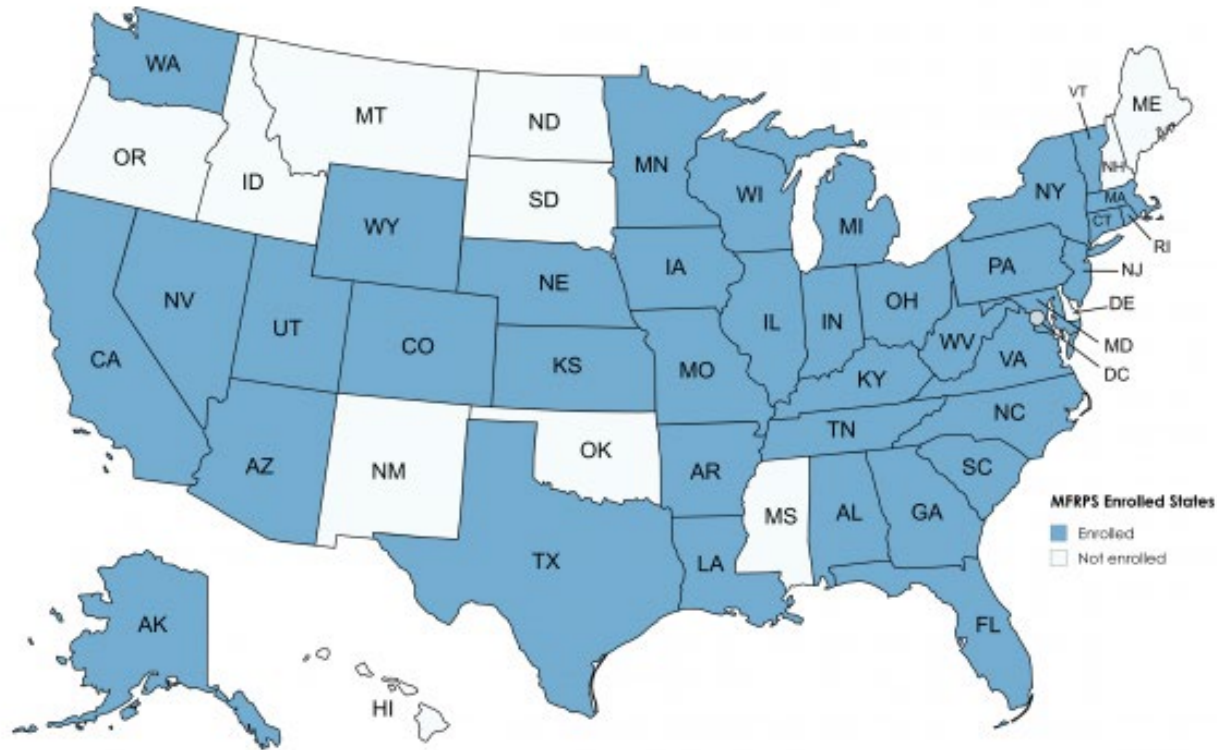
STATE PRODUCE



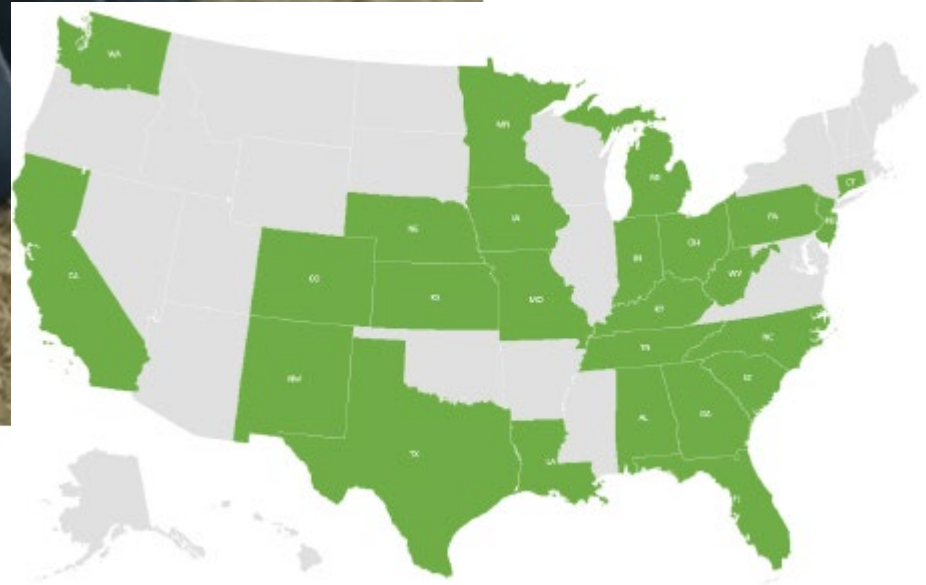
PRODUCE REGULATORY PROGRAM STANDARDS ALLIANCE



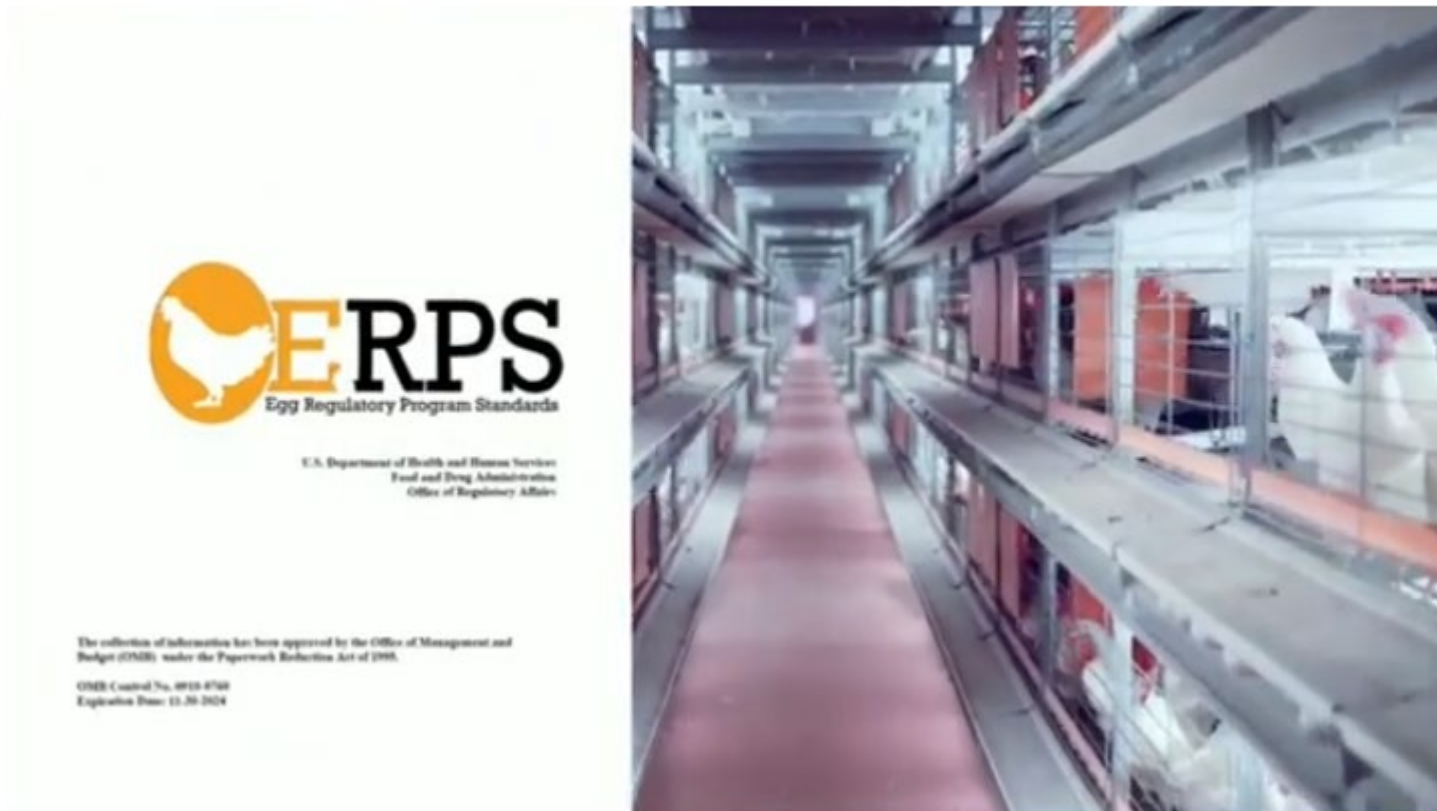
MANUFACTURED FOOD REGULATORY PROGRAM STANDARDS



ANIMAL FEED REGULATORY PROGRAM STANDARDS



EGG REGULATORY PROGRAM STANDARDS



DOMESTIC MUTUAL RELIANCE PARTNERSHIP AGREEMENTS



Domestic Mutual Reliance



STRATEGIC PARTNERSHIPS

between the U.S. Food and Drug Administration (FDA) and state, local, tribal, and territorial (SLTT) regulatory agencies

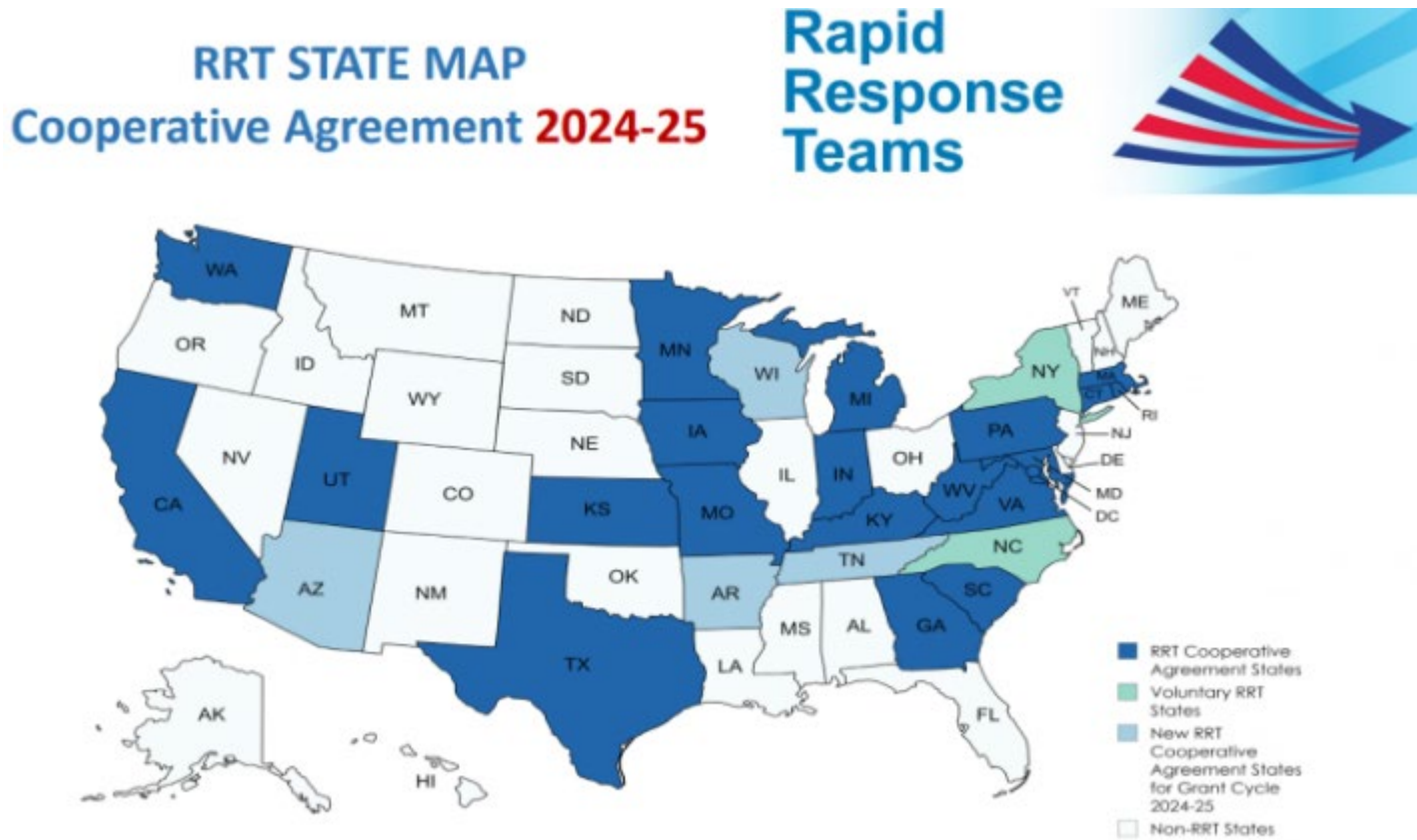
PROTECT THE HUMAN AND ANIMAL FOOD SUPPLY CHAIN.

Success includes collaboration on

10 OPERATIONAL AREAS:

- Information Sharing and Public Health Protection through Legal Authority
- Planning and Evaluation
- Leveraging Resources
- Information Technology
- Training
- Risk-Based Inspection Program
- Compliance and Enforcement
- Industry and Community Relations
- Laboratory Support
- Emergency Response

RAPID RESPONSE TEAMS



One Integrated Workforce

