

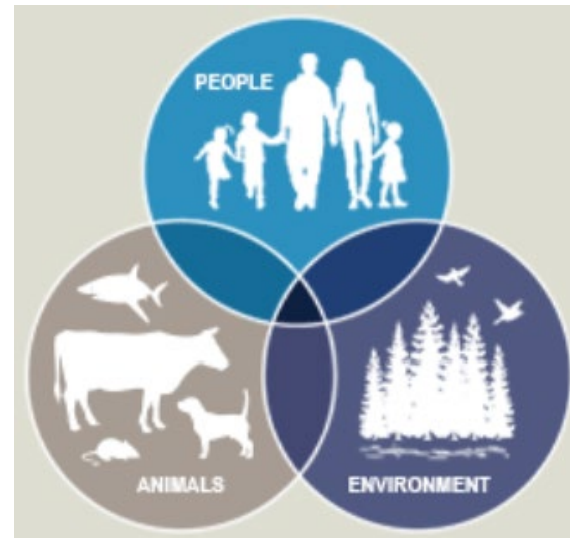
A One Health Approach to Produce Safety?

Jim Gorny, Ph.D.

Sr. Science Advisor for Produce Safety

U.S. FDA Center for Food Safety and Applied Nutrition

Spotlight One Health

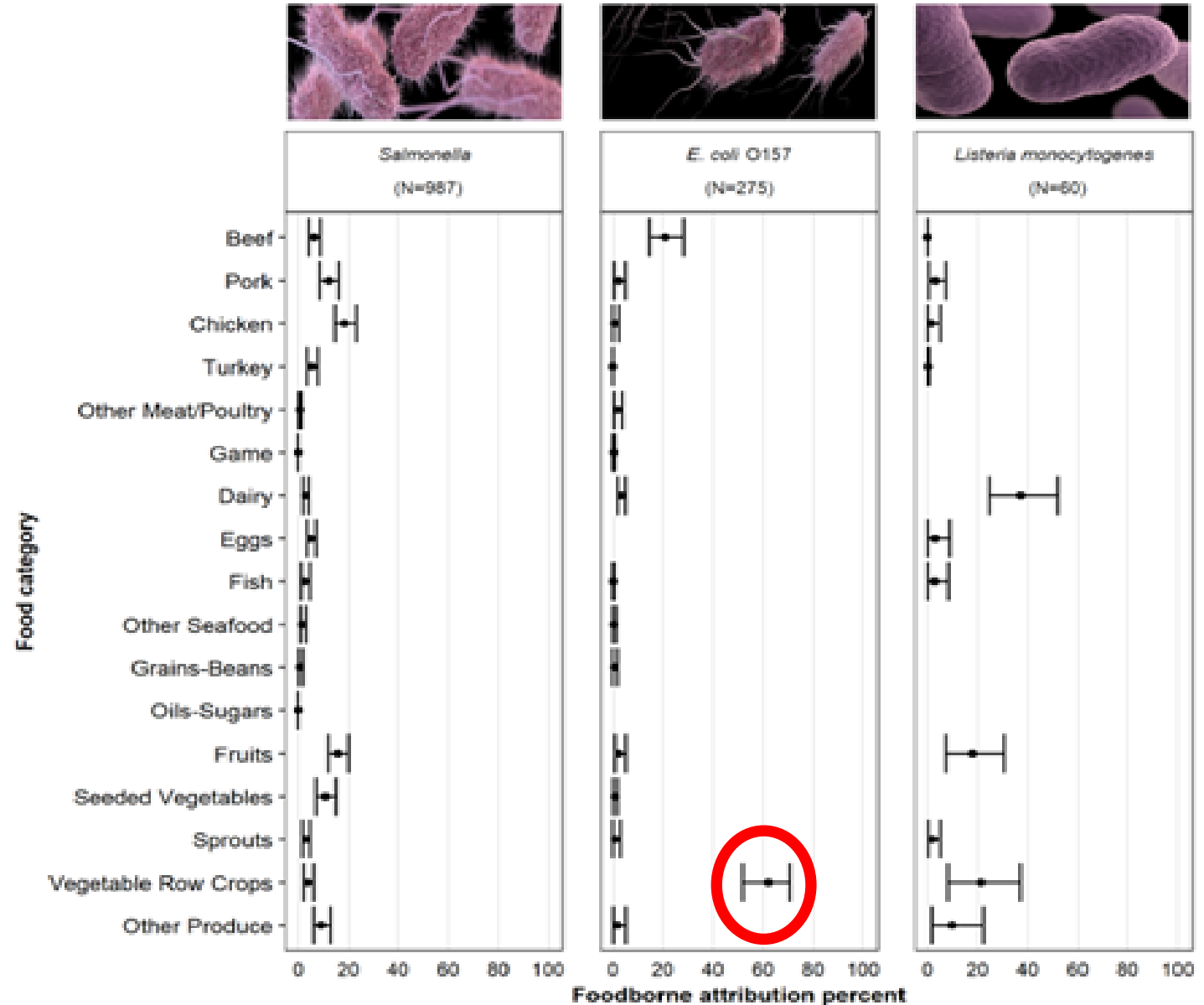


Foodborne Illnesses, by Human Pathogen, Attributed to Foods

From: Foodborne illness source attribution estimates for *Salmonella*, *E coli* O157 and *Listeria monocytogenes* - United States 2021 The Interagency Food Safety Analytics Collaboration (IFSAC) [November 2023 CDC, FDA, USDA](#)



Figure 1: Estimated percentage (with 90% credibility intervals) for 2021 of foodborne *Salmonella*, *Escherichia coli* O157, and *Listeria monocytogenes* illnesses attributed to 17 food categories based on outbreak data from 1998 through 2021, *† United States ([Click here to download data](#))



ROMAINE LETTUCE HARVEST REGIONS



Salinas Associated Outbreak, Fall 2020

- 40 Illnesses
- 20 Hospitalizations
- 2 HUS

Salinas Associated Outbreak, Fall 2019

- 167 Illnesses
- 85 Hospitalizations
- 15 HUS

Santa Maria Associated Outbreak, Fall 2018

- 62 Illnesses
- 25 Hospitalizations
- 2 HUS

Yuma Associated Outbreak, Spring 2018

- 210 Illnesses
- 96 Hospitalizations
- 27 HUS
- 5 Deaths

N

POISONED

THE DIRTY TRUTH
ABOUT YOUR FOOD



August 2023

Figure 4: Five Rivers Cattle, LLC, feedyard & canal



From: R. Glennon 15 Jan 2021 "Is Romaine Safe to Eat?" The Water Report Issue 203: 1-8.

(b) (4), (b) (6)

Canal Positive #1

Memorandum to the File on the Environmental Assessment; Yuma 2018 E. coli O157:H7
Outbreak Associated with Romaine Lettuce

Canal Positive #2

(b) (4), (b) (6)

Cattle Pen Drainage Retention

Unlined canal

Unlined canal

Canal Positive #3

(b) (4), (b) (6)

(b) (4), (b) (6)

(b) (4), (b) (6)

(b) (4), (b) (6)


(b) (4), (b) (6)

(b) (4), (b) (6)

(b) (4), (b) (6)

COMPREHENSIVE REVIEW

Understanding potential cattle contribution to leafy green outbreaks: A scoping review of the literature and public health reports

Onay B. Dogan  | Makenzie G. Flach | Markus F. Miller | Mindy M. Brashears

Conclusions

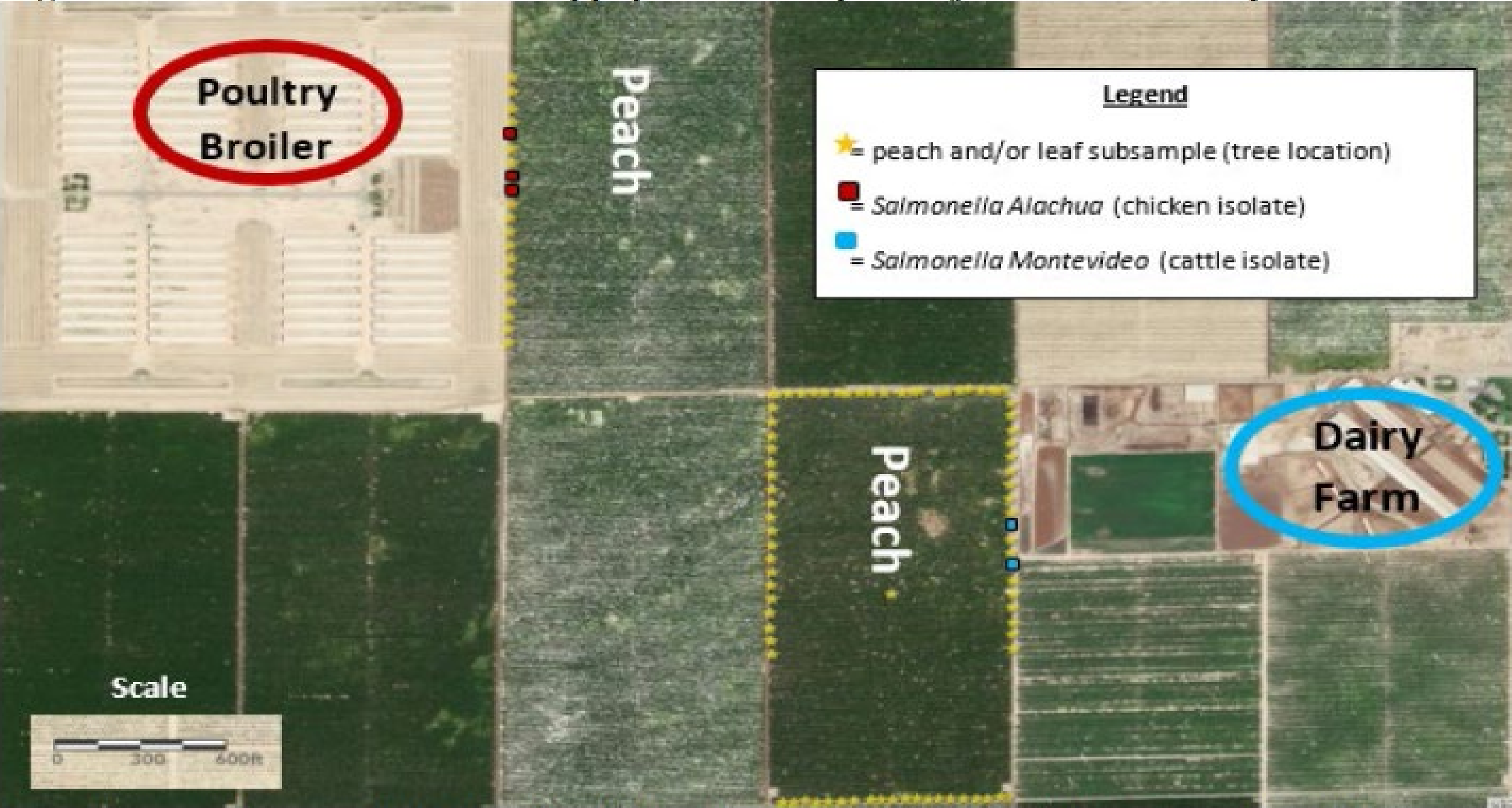
- *“The results from this scoping review conclude that both the scientific literature and public health reports suggested livestock operations nearby, especially cattle, as a potential source of contamination of leafy greens; however, knowledge gaps in the relative contribution of specific mechanisms of contamination were also identified.”*
- *“Several studies report that contamination events seem to occur through multiple pathways (water, soil, air, wildlife, and others), which require the consideration of the produce supply chain as a whole.”*

***Salmonella* Enteritidis Outbreak**
Associated with Peaches, Summer 2020

- **101 Illnesses**
- **17 States**
- **27 Hospitalizations**
- **0 Deaths**
- **Additional Illnesses in Canada**



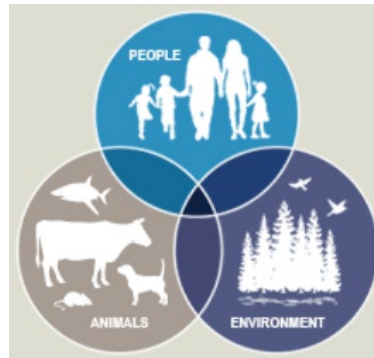
Figure 1: Location of *Salmonella* spp. positive samples adjacent to animal operations



One Health Approach to Produce Safety?

Vision Statement: Safe and abundant food - reducing on-farm produce contamination with human pathogens and associated illnesses by taking a One Health approach, which recognizes the interconnection between people, animals, plants and their shared environment.

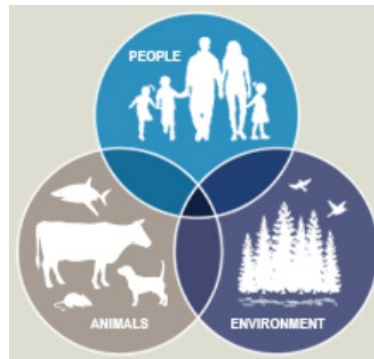
Strategy: Work with government, industry, consumer and academic stakeholders to assure that agricultural policy appropriately addresses control of human pathogens in the broader agricultural environment specifically when it impacts the safety of produce where it is grown, harvested, packed and held.



One Health Approach to Produce Safety

Background

- The circulation in the broader agricultural environment of zoonotic human pathogens of public health significance is a likely environmental antecedent leading to fresh produce contamination and subsequent outbreaks.
- Human pathogens of public health significance are prevalent in the broader ag environment.
- Food Safety is not a primary consideration when ag policy is being developed or implemented.
- A new additional approach is likely needed to enhance produce safety.



One Health Approach to Produce Safety?

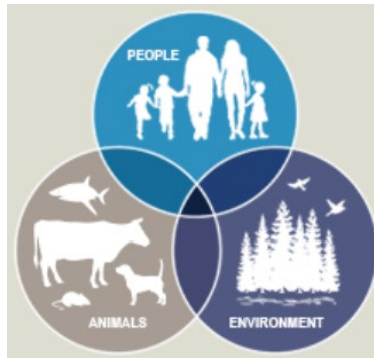
Approach to Change

- 1) Awareness**
- 2) Understanding**
- 3) Implementation**
- 4) Verification**

One Health Approach to Produce Safety

Next Steps

- 1) FDA Longitudinal Studies In AZ & CA**
- 2) Association of Food & Drug Officials (AFDO) Healthy People 2030
One Health WorkGroup Atlanta 3/25-26/24**
- 3) USDA APHIS Convened Farm to Fork Meeting Early May 2024**
- 4) FDA / USDA Interagency Produce Safety Workgroup**
- 5) California Agriculture Neighbors (CAN) CDFA & Monterey County
Farm Bureau**
- 6) NASDA Engagement**
- 7) Other**





Jim Gorny, Ph.D.

Sr. Science Advisor for Produce Safety
FDA Center for Food Safety & Applied Nutrition
Office of the Center Director
Tel: 240.535.0526
James.Gorny@fda.hhs.gov