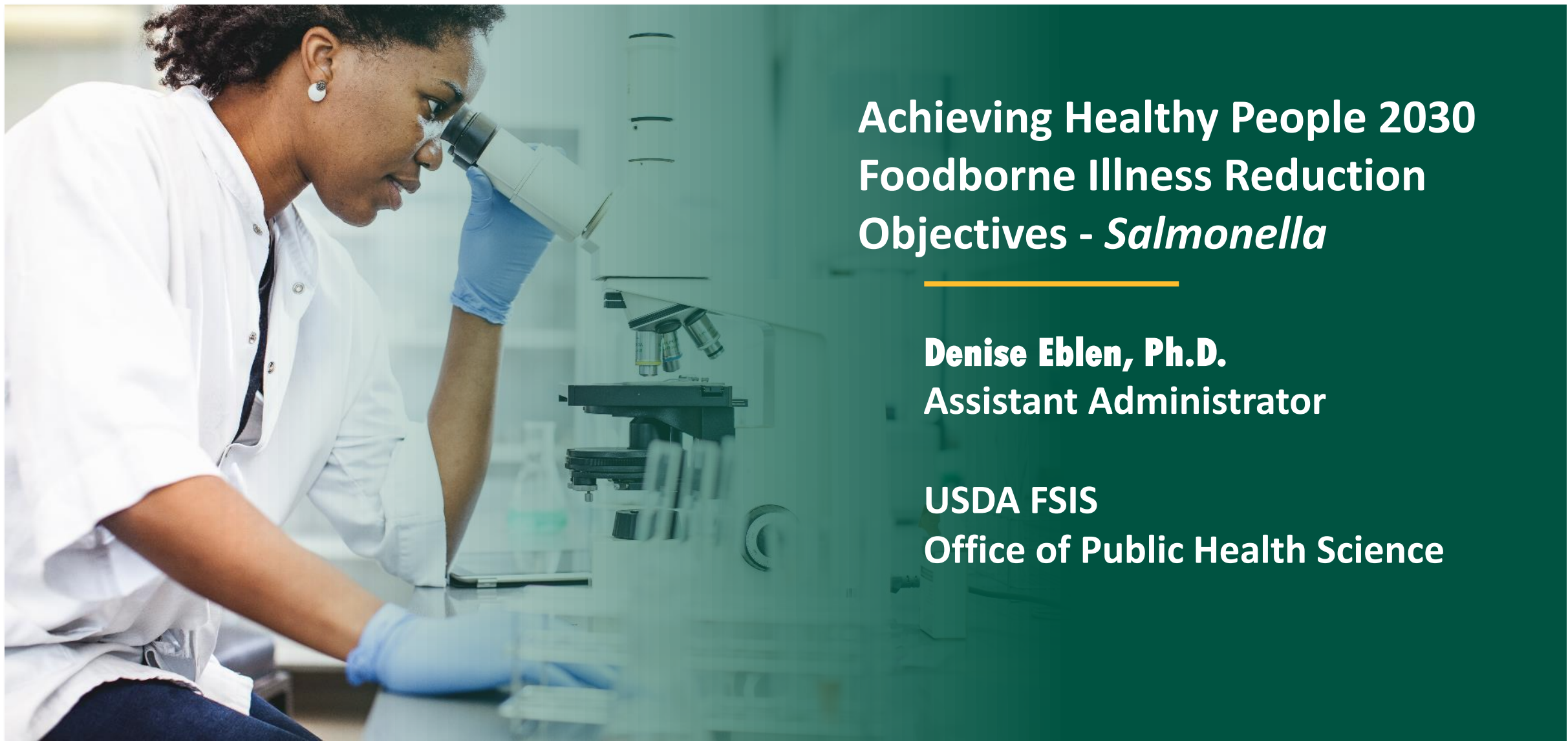




Food Safety and Inspection Service
U.S. DEPARTMENT OF AGRICULTURE



Achieving Healthy People 2030 Foodborne Illness Reduction Objectives - *Salmonella*

Denise Eblen, Ph.D.
Assistant Administrator

USDA FSIS
Office of Public Health Science

Overview

- **AFDO established a committee to address the Healthy People 2030 Goal of Reducing Foodborne Diseases**
 - Presentation focuses on reducing salmonellosis
- ***Salmonella* Workgroup established**
- **Charge is under development**
- **Timeframe: Recommendations to be published in the next 2 years**



AFDO Healthy People 2030: Reducing salmonellosis

- **Goal: Develop recommendations that will result in a reduction in salmonellosis associated with chicken**
 - Contribute to meeting the Healthy People 2030 goal of <11.1 cases of salmonellosis per 100,000 population
 - Address the *Salmonella* antimicrobial resistance (AMR) goal
- **Scope: Address contamination at all points along the chicken supply chain, both pre-harvest and post-harvest**
 - Consider a “One Health” approach
- **Need to develop a focused charge for the workgroup**
- **Held a symposium on control of *Salmonella* in chicken**



Food Safety and Inspection Service
***Salmonella* Workgroup Members**

- **Denise Eblen, USDA FSIS – WG Chair**
- **Samuel Crowe, CDC**
- **Sandra Eskin, USDA Office of Food Safety (formerly Pew Charitable Trusts)**
- **Craig Hedberg, University of Minnesota**
- **Ernest Julian, Rhode Island Department of Health (Retired)**
- **Sheryl Shaw, USDA FSIS**
- **Sarah Sorscher, Center for Science in the Public Interest**
- **Hillary Thesmar, Food Marketing Institute**
- **Roberta Wagner, Consumer Brands Association**
- **Isabel Walls, USDA FSIS**
- **Hillary Whitham, CDC**
- **Martin Wiedmann, Cornell University**
- **Beth Wittry, CDC**

- **Prevention/intervention strategies**
 - What strategies are effective at preventing contamination/reducing *Salmonella* in poultry?
- **Detection/attribution methods**
 - Do we have appropriate detection methods for *Salmonella* in poultry?
 - Do we have appropriate attribution methods?
- **Education/communication strategies**
 - Are best practices being communicated to those who need to know them?
 - How can we improve outreach?

AFDO Symposium May 14, 2021

- **Presentations on the key issues related to reducing salmonellosis in chicken**
- **Setting the stage**
 - Consumption of poultry is a major way people get *Salmonella* infections - Patricia Griffin, CDC - 30 minutes
 - *Salmonella* associated with chicken meat – overview - Kis Robertson Hale, FSIS
- **Each additional presentation answered the following question:**

What one strategy will have the most impact in reducing salmonellosis?

- **Prevention/intervention strategies**
 - **Pre-harvest strategies to control *Salmonella*** – Kim Cook, ARS
 - **European experience with controlling *Salmonella*** – Kris De Smet, European Commission
 - **Vaccine approvals** – Connie Schmellik Sandage, APHIS
 - **Industry experience with vaccination/other pre-harvest tools to control *Salmonella* in poultry** – Bob O'Connor, Foster Farms
 - **Animal feed as a source of *Salmonella*** – William Flynn, FDA CVM
- **Post-harvest interventions, e.g., bacteriophage, irradiation, organic acids, etc.** – Ashley Peterson, NCC

- **Detection methods**
 - **WGS to identify virulence factors? What data do we have now to inform priority serotypes?** – Martin Wiedmann, Cornell
 - **Enumeration methods for *Salmonella*** – Dayna Harhay, ARS
- **Education/communication strategies**
 - **Effective ways to communicate best practices that result in behavior change** – Benjamin Chapman, NC State
 - **Incentivizing stakeholders to adopt best practices (industry, retail, consumers)** – Sandra Hoffman, ERS
 - **Enterprise risk management – financial risk** – Melanie Neumann, Neumann Risk Services

Next Step -

- **Develop science- and data-based recommendations, with action items, targeted at the reduction of *Salmonella* foodborne illness associated with chicken meat**
 - Need to focus the charge to ensure it is manageable/will achieve goal



Food Safety and Inspection Service
U.S. DEPARTMENT OF AGRICULTURE

