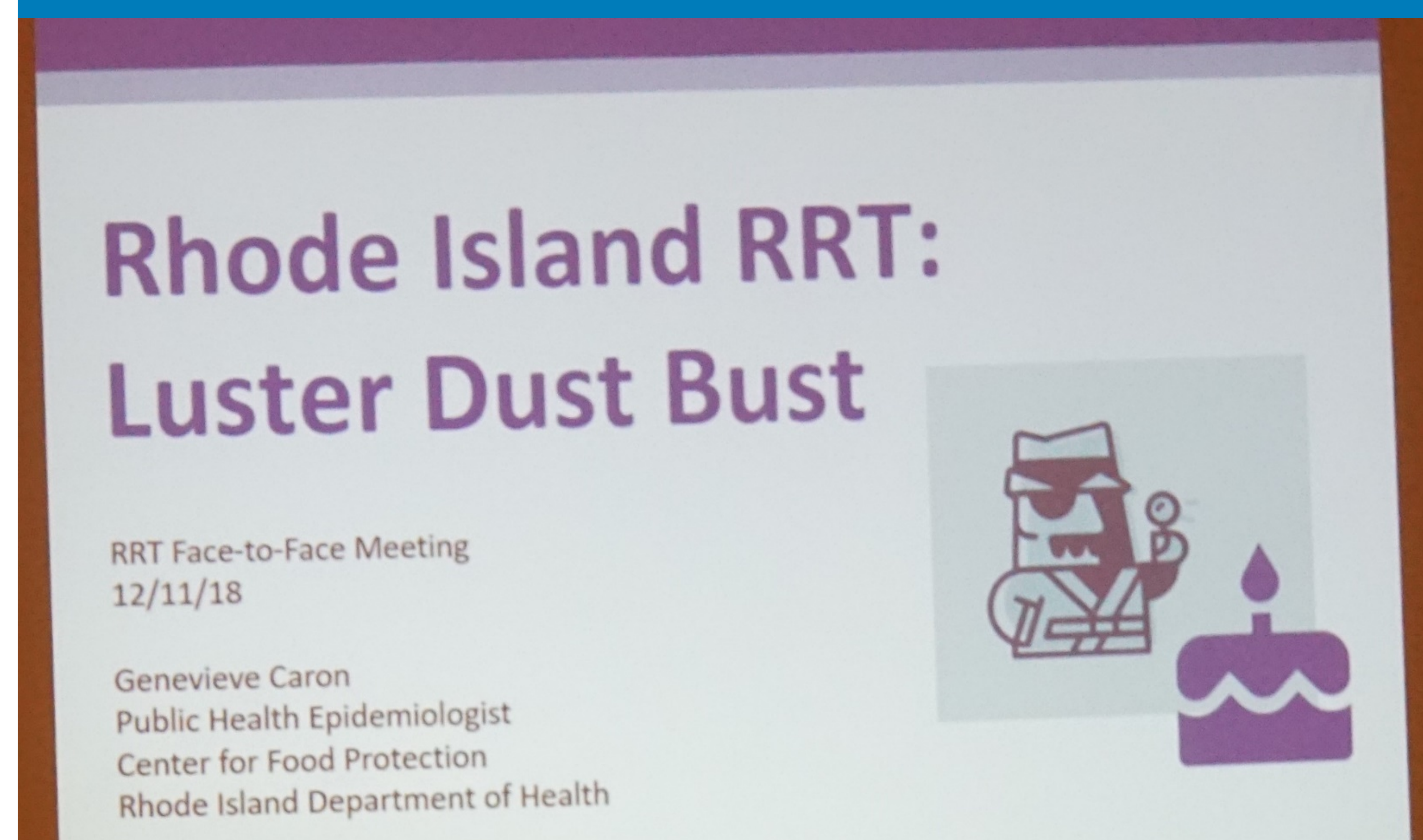


Information on Luster Dust Helps Missouri Tackle a Lead Case Regarding Food

Another RRT Helped Us Stay Alert. Sharing Information Is Huge!



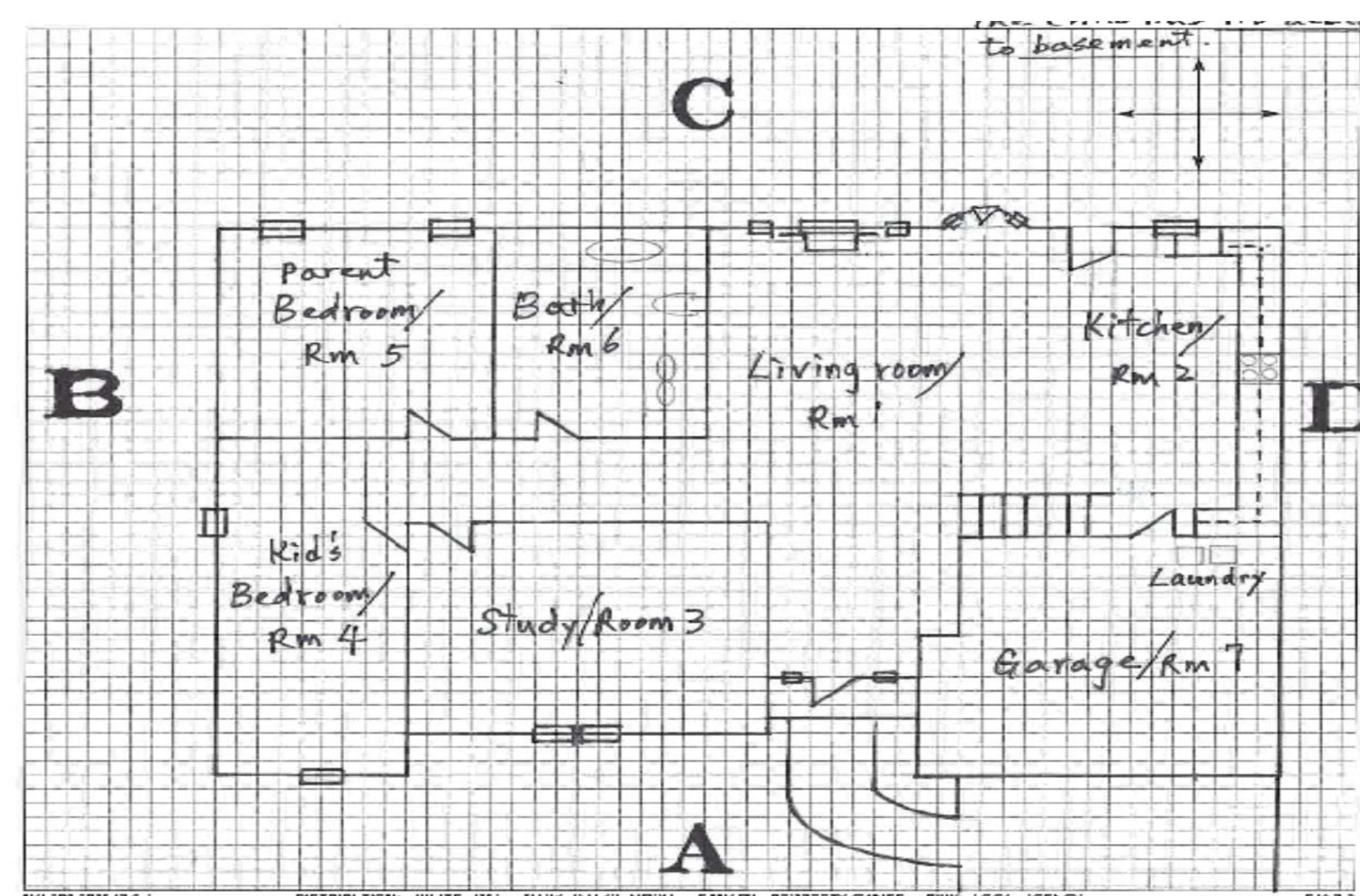
Rhode Island Provided information about their Luster Dust Investigation on the National Rapid Response Team (RRT) Conference Call and at the National RRT Face to Face Meeting in Austin, Texas. The presenter, Genevieve Caron, provided Missouri with detailed information about their investigation which found copper in icing decorations used for a birthday cake. Luster dust is a powder used to add color, sparkle or a metallic appearance to cakes and candies.

The Missouri RRT Shared The Information So Investigators Would Be Able to Recognize The Threat.



Information from Rhode Island's presentation was shared with the MRRT Steering Committee, other team members and even people who might not normally work with the MRRT. Otherwise, it might be hard to identify the potential cause of illnesses associated chemicals or metals that could be present in luster dust.

A Missouri Lead Investigator Was Looking Everywhere To Find The Cause of High Blood Lead Levels In A Child.

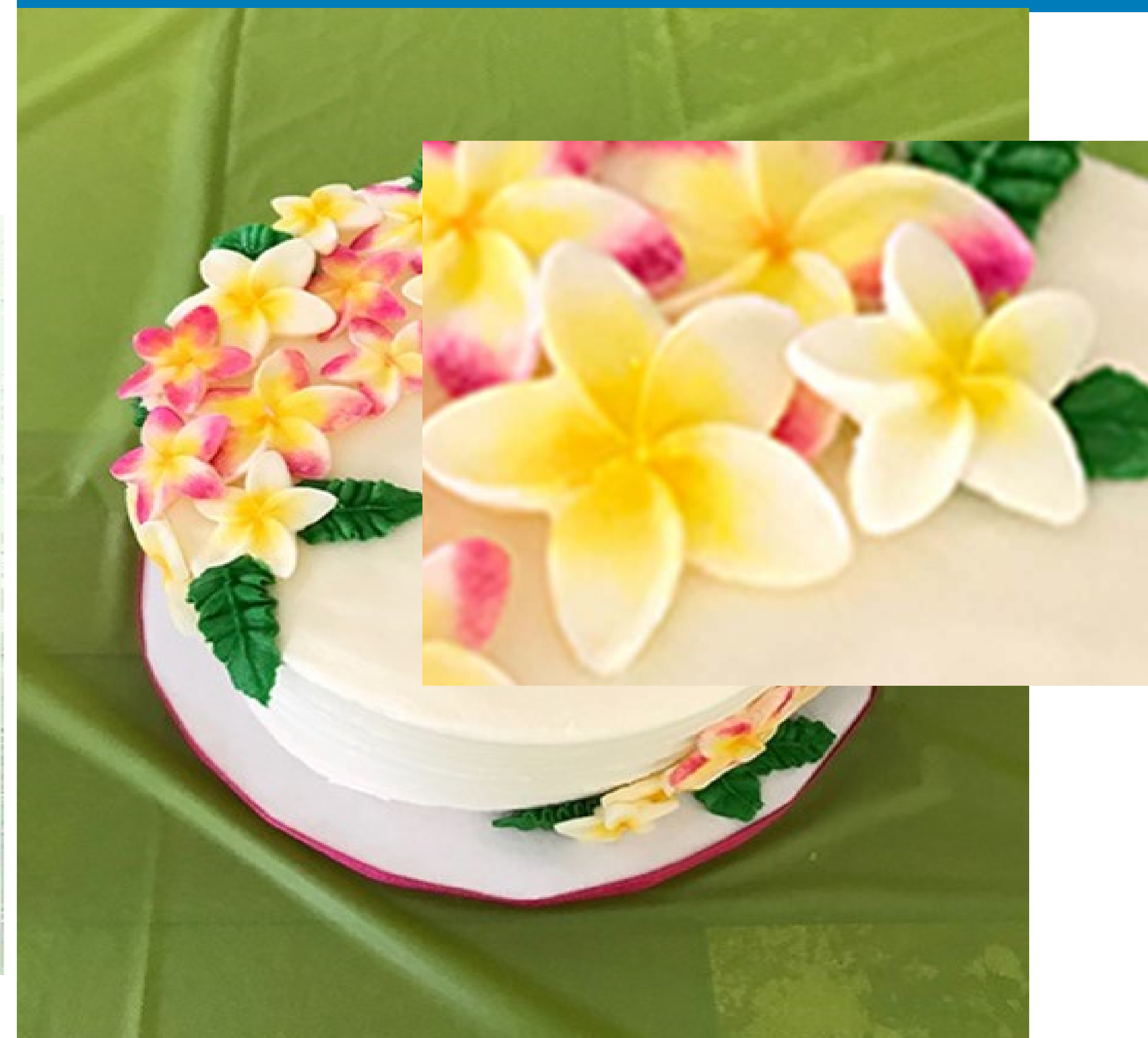


This is a blueprint of the family's home. It is a new home. There was no remodeling. No paint issues. Soils, toys, keys and water did not contain lead. The mother started to take food related products out of a cupboard to see if something might explain her child's elevated blood lead levels.



The Primrose Petal Dust In This Container Caught The Investigator's Attention When She Detected Significant Lead.

The Luster Dust In This Cake Contained Lead.

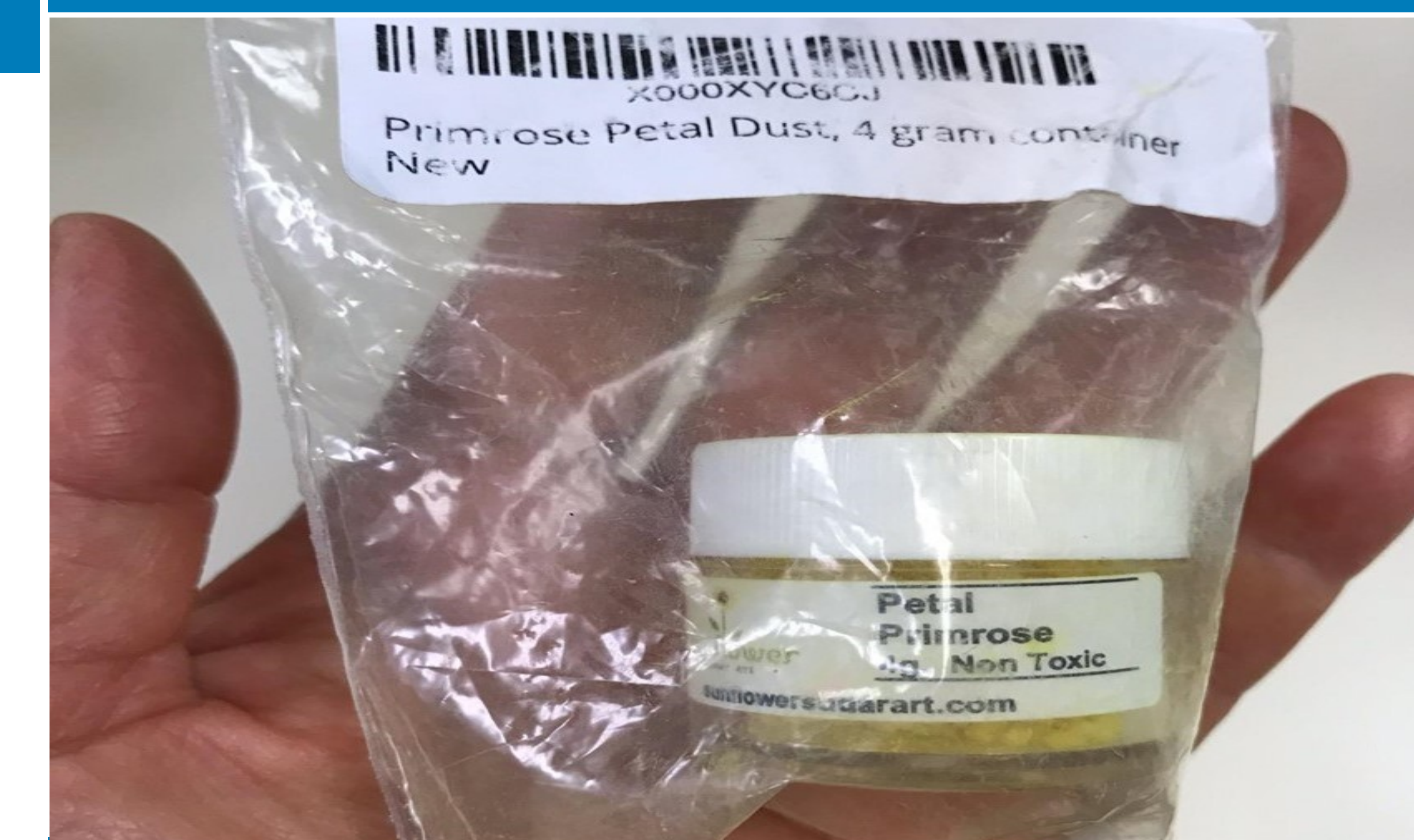


Yellow Primrose Petal Dust was used to create the flowers on this cake. The child with the high lead levels loved the petals especially.



The Primrose Petal Dust Was Also Used To Make The Yellow Flowers On These Cup Cakes Served At The Same Party As The Cake.

Tests Detected 290,000 Parts Per Million Lead In The Product!



Additional Tests On A Purchased Unopened Product Were Still High In Lead.



Missouri purchased and tested a number of unopened products including the yellow primrose petal dust. This unopened jar contained 250,000 parts per million lead. That is 25% lead!

Following Test Results, Missouri Issued An Advisory Regarding Primrose Petal Dust.

The advisory said, "Sunflower Sugar Art makes the claim on their website of food-grade silicone molds, cutters and color dusts for sugar art and that the Primrose Petal Dust product can be applied to fondant/gum paste, chocolate, pulled sugar/malt and more. Consumers who have purchased Primrose Petal Dust should not apply this product to any food product and are encouraged to discard it immediately."