

IFSS Toolkit Workshop: Introduction to the Integrated Food Safety System



What is Integration?



- Not very clear?
- Many types—(Racial, Social, Horizontal, Vertical, Data, Systems, and Technology)
- Generally means combining parts so they work together or form a whole
- A systematic coordination of food protection functions

Integrated Food Safety System (IFSS)

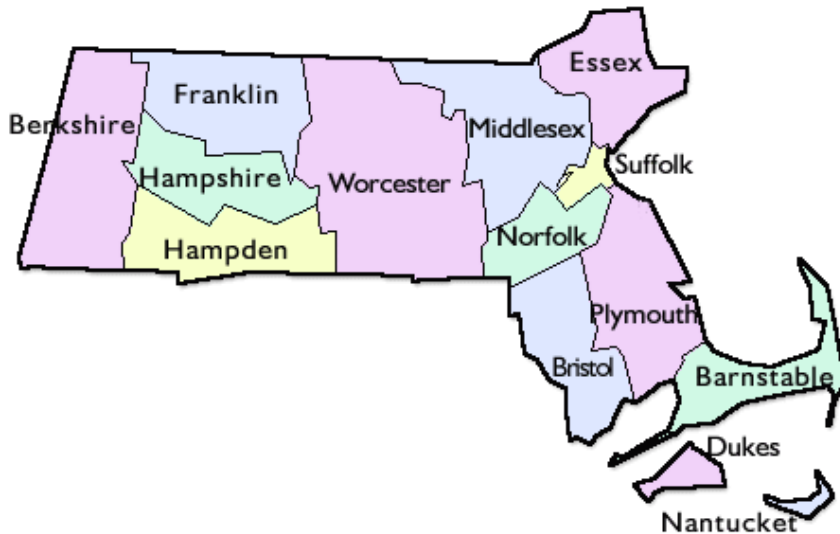
- Jointly developed and implemented surveillance, inspection, and enforcement programs.
- Benefits:
 - Increased ability to assess potential risks at domestic food facilities.
 - More consistent coverage of these facilities across the entire food supply chain.
 - Greater food surveillance through integration of food facility inspection information.
 - Improved rapid response capacity and efficiency.
- **Outcome: Increased public health protection.**

How Well Are We Integrated Today?



- 14 Federal Agencies and 71 Agreements
- Multiple State Agencies = 75
- County, City, and Townships = 2800
- Is Integration Practical?

Where to Begin?



- 351 Health agencies spread out among state, county, city, and township.
- Where do we begin to build an integrated system?

We can begin here!

Current Collaboration



- What integration efforts are occurring in your jurisdiction right now?
- What improvements to these efforts could you recommend?

Case Study—Chef Boyardee

- Product produced in Canada.
- Processing defect results in product being diverted to pet food.
- Product marketed as human food.



Case Study—7 Eleven Sandwiches



- Numerous samples tested positive for *Listeria monocytogenes*.
- Results were followed by multi-state recalls.
- Manufacturing plant is regulated by both FDA and USDA/FSIS.

Gel Candies

CHILD WHO CHOKED ON CANDY IS BURIED

Inspectors pull jellies from stores

By MICHELLE SAHN
STAFF WRITER

MIDDLESEX COUNTY: About 20 inspectors from the county Health Department have been visiting stores throughout the area, asking vendors to pull minifruit-jelly treats from their shelves because of the choking hazards associated with the product.

By yesterday afternoon, they found the products at about

28 of the more than 400 stores they had visited, and store owners were

extremely reasonable and co-

operating 100 percent," said Bernard

Mihalko, the director of the Middlesex County Health Department.

On Wednesday, inspectors began visiting businesses that sold

candy, from supermarkets to 99-cent stores, he said.

By yesterday afternoon, they had been to 450 establishments and expected to finish up their visits to the remaining 50 on their list by this afternoon, he said.

While county authorities were not obligated to make the trips, they wanted to make sure everyone knows about the



Hermínia and Gregorio Feliciano weep over the casket of their son Josue, 2, who died last week after choking on a minifruit-jelly treat. See story B1

A fruit-jelly treat, below, and its container, right.



Imported Candy



Infant Formula



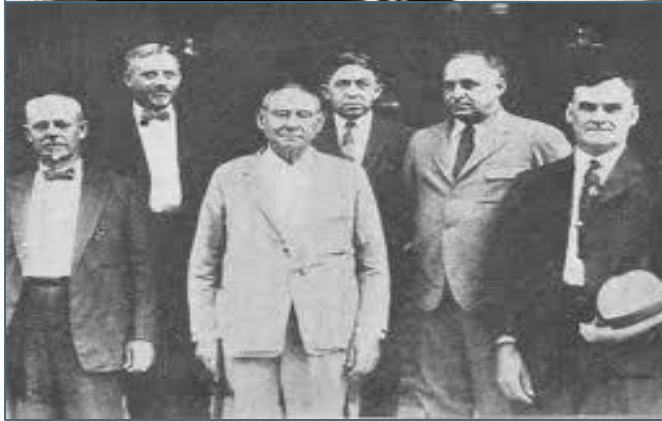
History of Food Safety



- Food and drug regulations had roots at the state and local level.
- 1641 Massachusetts law.
- Uncertainty about food quality
- Cheapening of foods with preservatives
- 1906 Pure Food & Drug Act
- 1938 FD&C Act
- 1968 FDA—Public Health Service
- 1969 Cooperative Programs

Harvey W. Wiley

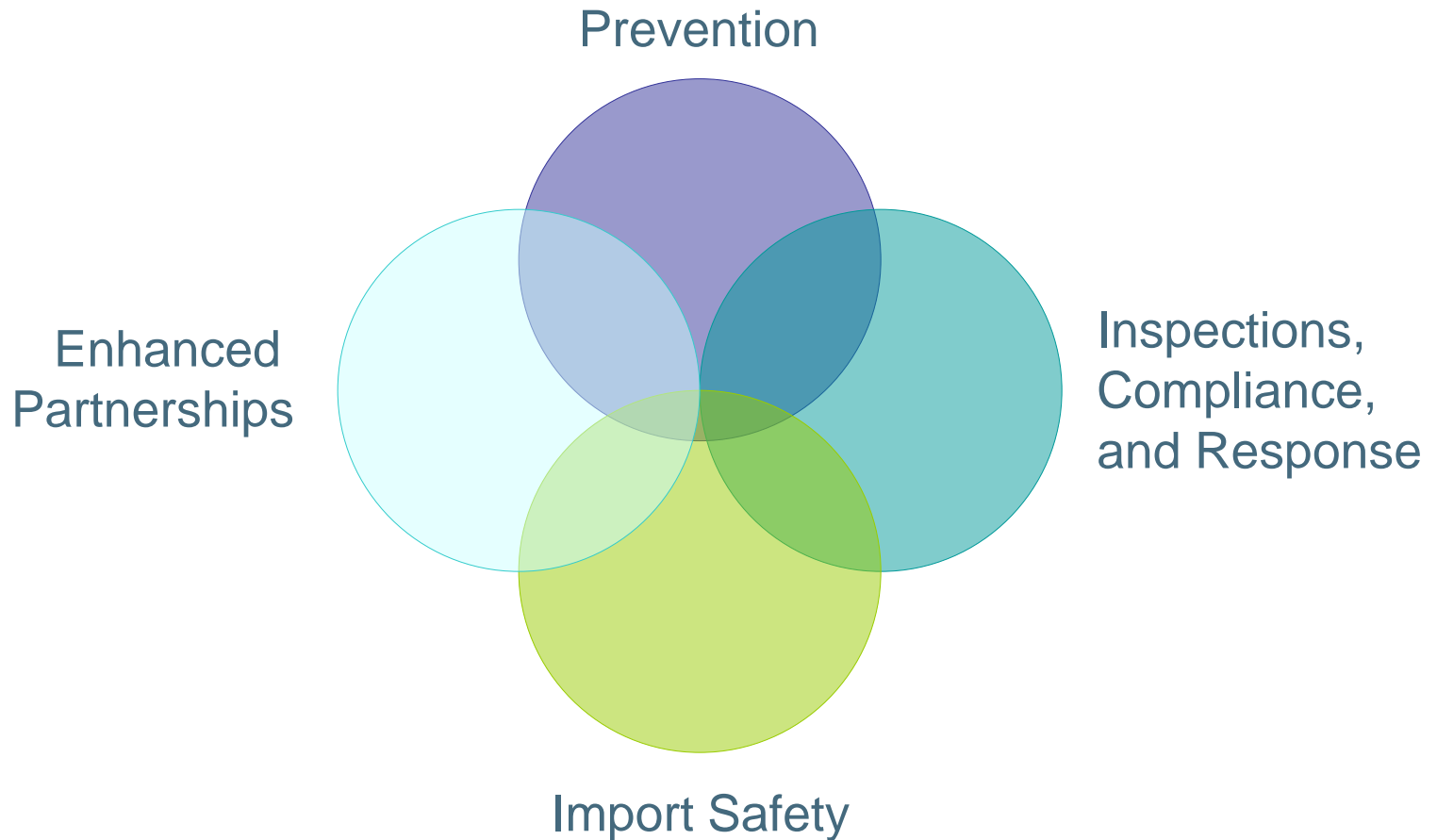
- Father of Food and Drug Law



Impact of History

- Multiple state adulteration rules paved the way for federal intervention and the need for national uniformity.
- Cooperative Programs demonstrated the ability of states and FDA to work together.
- Other examples of collaboration included:
 - FDA Inspection Contracts
 - FDA Cooperative Programs
 - FSIS Cooperative Agreements
 - Partnerships

Food Safety Modernization Act



History of Integration



- AFDO Vision 1998
- National Food Safety System (NFSS)
- Presidential Initiatives
- 50 State Meetings
- Partnership for Food Protection
- Food Safety Modernization Act (FSMA)

Partnership for Food Protection

- Information Technology
- Laboratories
- National Standards
- National Workplan
- Oversight
- Performance Measures and Outcomes
- PETNet
- Policy and Procedures
- Response
- Training and Certification



What Can You Do Now?

IFSS Toolkit—Focus Areas

Integration of:

1. Communication
2. Roles and Responsibilities
3. Integration of Legal Authority
4. Resources
5. Emergency Response
6. Global Activities

Key Indicators of Integration

Where Do You Fit In?

